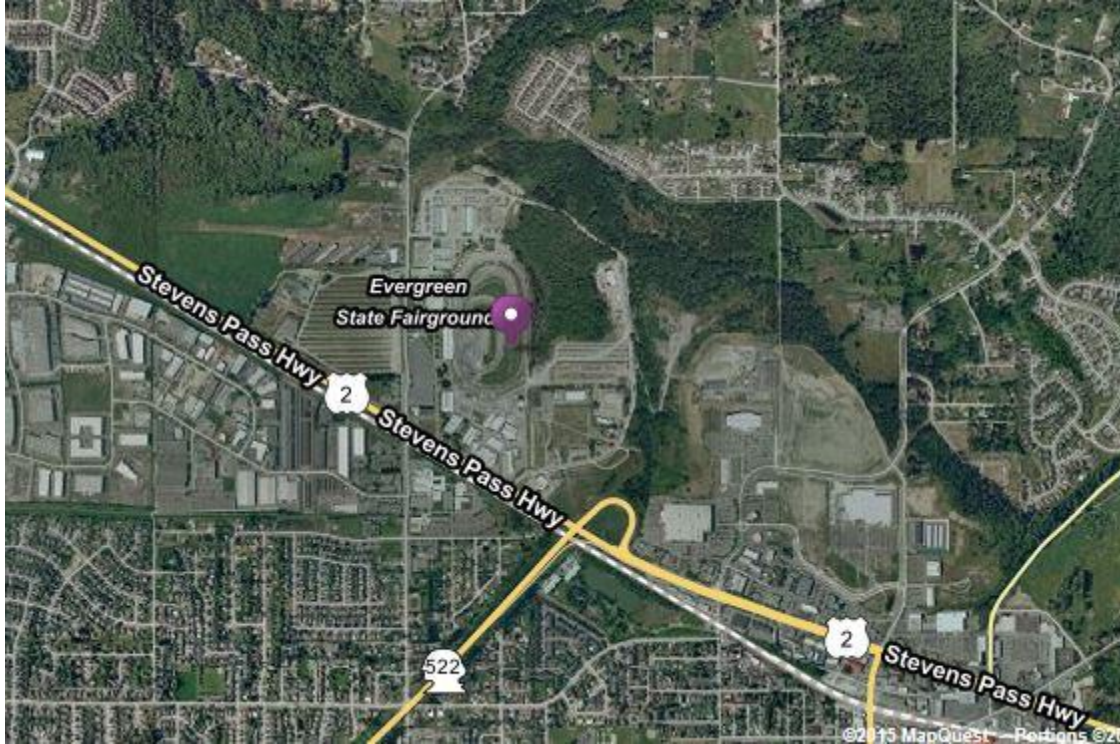


TRAVEL DIRECTIONS TO THE EVERGREEN EQUESTRIAN PARK:

From Interstate 5, coming from the North, take Hwy. 2 at Everett, and follow it to Monroe. From Interstate 5, coming from the South, take Interstate 405 at Renton and follow it past Bellevue and Kirkland, and then take Hwy. 522 to Monroe.



AREA LODGING

MONROE

- GUEST HOUSE INN & SUITES.....(360) 863-1900
(Ask for Horse Show Rate - Subject to Availability)
- BEST WESTERN SKY VALLEY INN.....(360) 794-6266
- MONROE MOTEL.....(360) 794-6751
- FAIRGROUND INN.....(360) 794-5401

SNOHOMISH (est. 10 min. west on Highway 2)

- INN AT SNOHOMISH.....(360) 568-2208 or (800) 548-9993

NORTH EVERETT (est. 25 min west on Highway 2)

- BEST WESTERN CASCADIA INN.....(425) 258-4141
- INN AT PORT GARDNER.....(425) 252-6779
- HOLIDAY INN.....(425) 339-2900
- QUALITY INN.....(425) 347-9099

SOUTH EVERETT (est 30 min drive)

- HOLIDAY INN EXPRESS HOTEL & SUITES (exit 186 off I-5).....(425) 609-4000
- ECONO LODGE INN & SUITES.....(425) 337-9090
- SUNRISE INN.....(425) 347-1100